

# COLUMBUS CITY SCHOOLS

## May 2016 Five Year Forecast (FYF) Update

General Fund and related debt service

- Fiscal Years 2016 – 2020
- Update to October 2015 FYF

Board of Education Meeting  
May 3, 2016



# The Five Year Forecast

- Required by 5705.391 of the Ohio Revised Code
- Adopted by October 31<sup>st</sup> and updated by May 31<sup>st</sup> of each fiscal year.
- Fiscal Year July 1 - June 30
  - e.g. FY17 = July 1, 2016 to June 30, 2017



# The Process

October  
2015

- New FYF
- Fiscal Years rolled back / FY16 - FY20 now in FYF
- Updated with latest information

Nov '15 -  
Feb '16

- Budget preparation process / program driven
- 5 years / FY17 - FY21

March  
2016

- Budget Presentations
- Internal / FAC /BoE

# The Process

*April 2016*

- Review by Finance & Appropriations Committee
- April 14th and April 26<sup>th</sup>

*May 3rd*

- First Presentation to Board of Education

*May 17th*

- Adoption by Board of Education

# The Process

May 31st

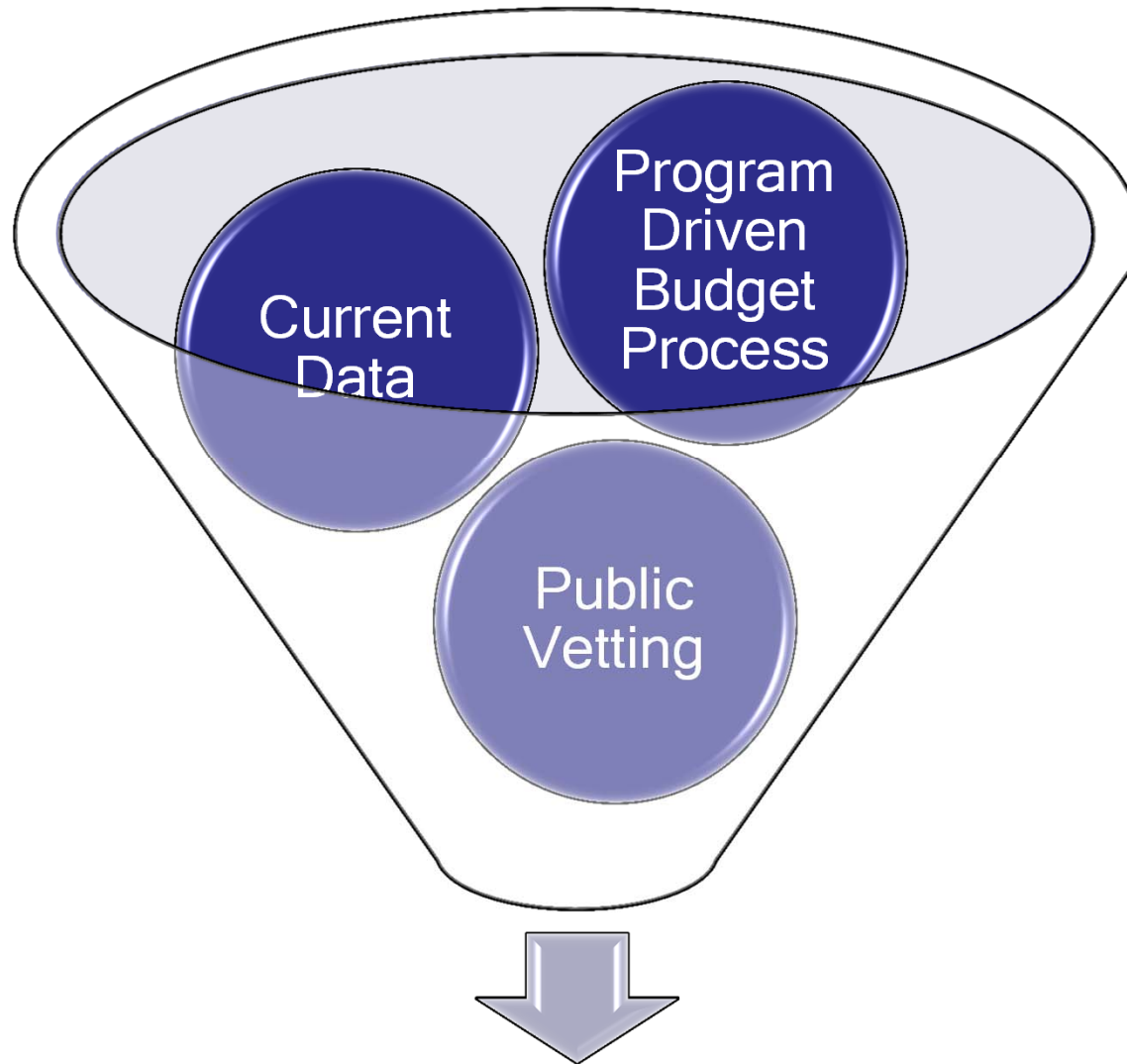
- FYF file with ODE

June 21st

- Board adopts budget (appropriation) for FY17

July 1st

- FY16-17 Begins



1. Five Year Forecast
2. FY17 Annual Appropriations

## Key Assumptions for FYF

- No New Property Tax Revenue
- State Funding Cap Increase = +7.5% for FY18 - FY20
  - Encompasses 2 new State budgets yet to be determined
- Certain Capital Items Pulled Out of Aspirational Non-Personnel Budget For Alternative Funding
- No New Personnel Beyond FY17
- Keep FY18 Ending Cash Balance Positive



# FY17-21 Aspirational Non-Personnel Budget Included in FY16-20 FYF Update

- Program Driven
- Well-documented
- Vetted internally and by FAC
- Special Board Meeting March 7th
- Basis for FYF (FY16-FY20)
- Certain Capital Items Pulled Out
  - Identified for possible alternative funding
  - ***Greater than \$153 million*** over 5 years
- Mission Critical Capital and Other Non-Personnel Items Retained in FY17 Budget



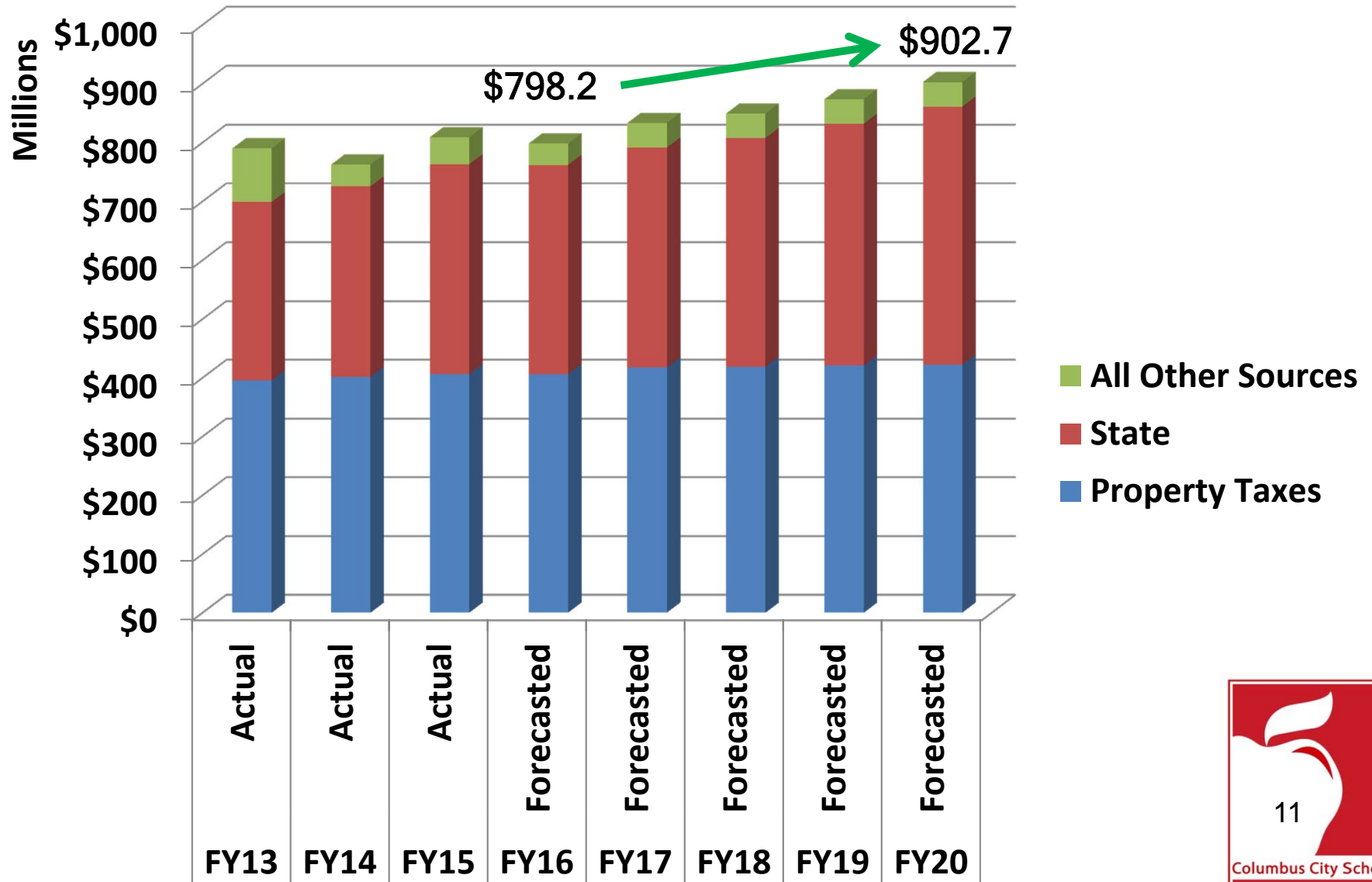


# Personnel Budget Included in FY16-20 FYF Update

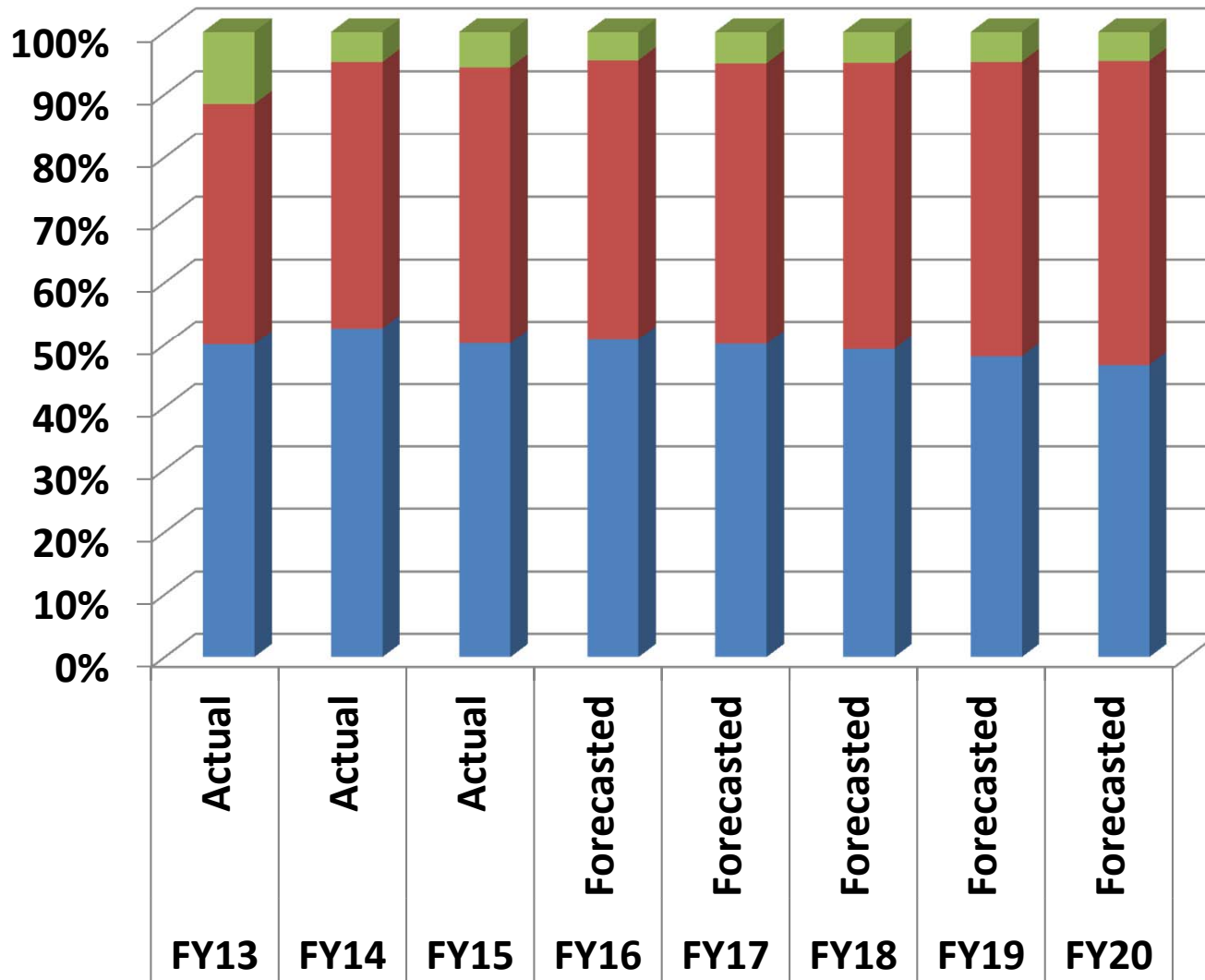
- New FTE (39.5) for FY17 ONLY
- No new staff included in FYF for FY18 - FY20

<u>Description</u>	<u>FTE</u>
Academic Services	9.0
Instructional Assistants	2.5
Special Education	20.0
Early Childhood Education (ECE)	2.0
Custodial	4.0
Transportation	1.0
Human Resources	1.0
Total	39.5

# Revenues



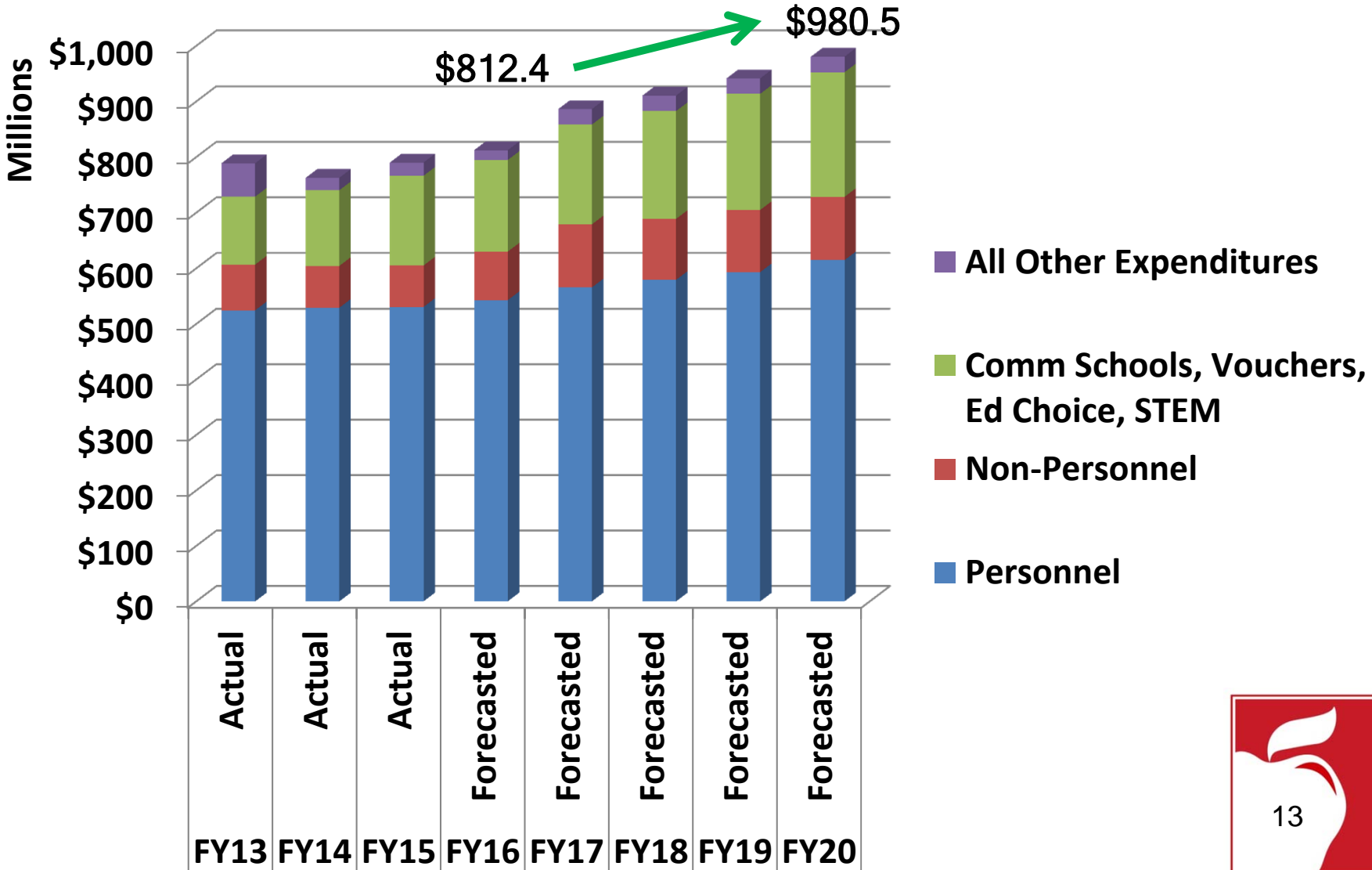
# Revenues



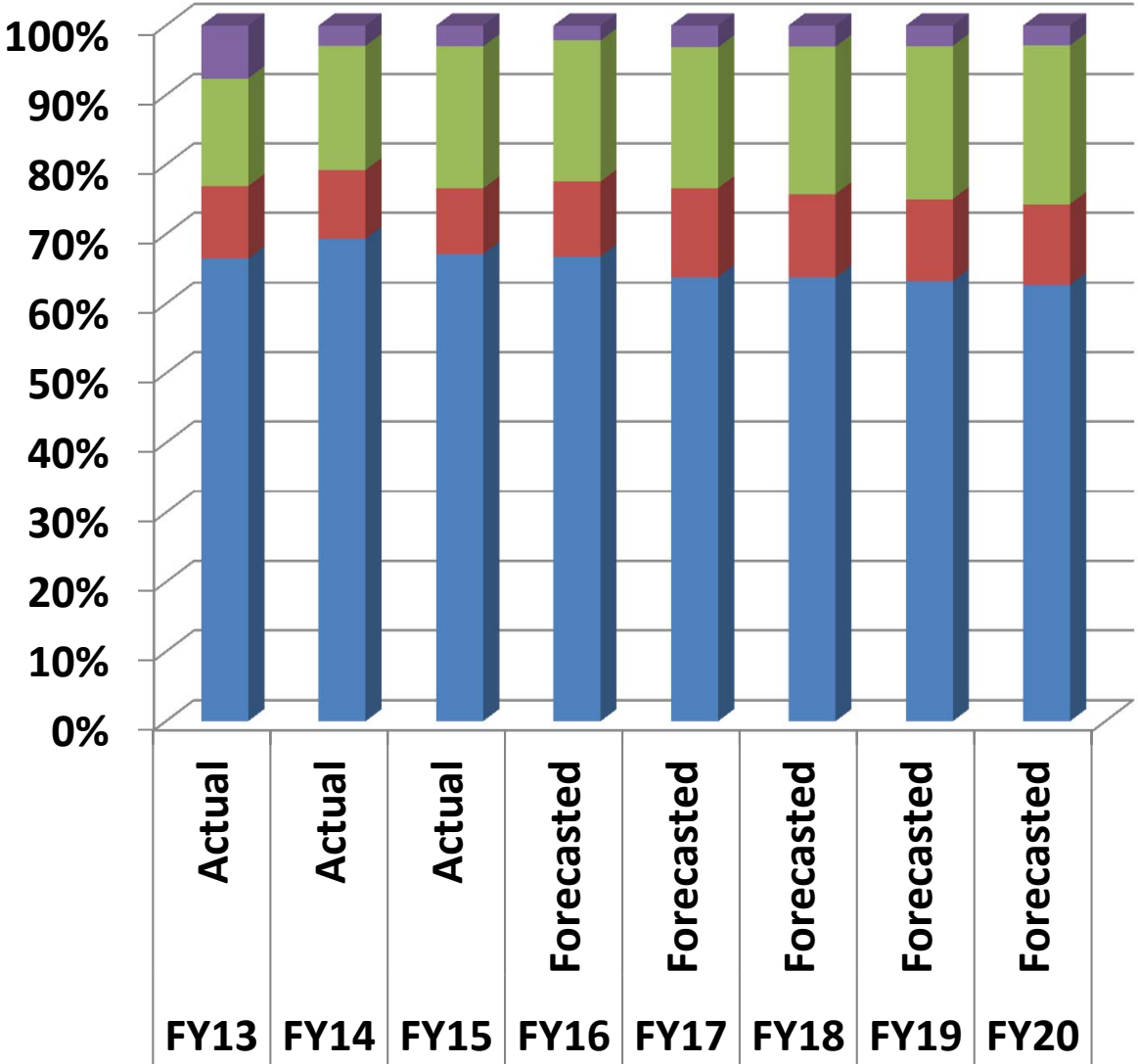
6% All Other Sources  
 44% State  
 50% Property Taxes

All Other Sources  
 State  
 Property Taxes

# Expenditures



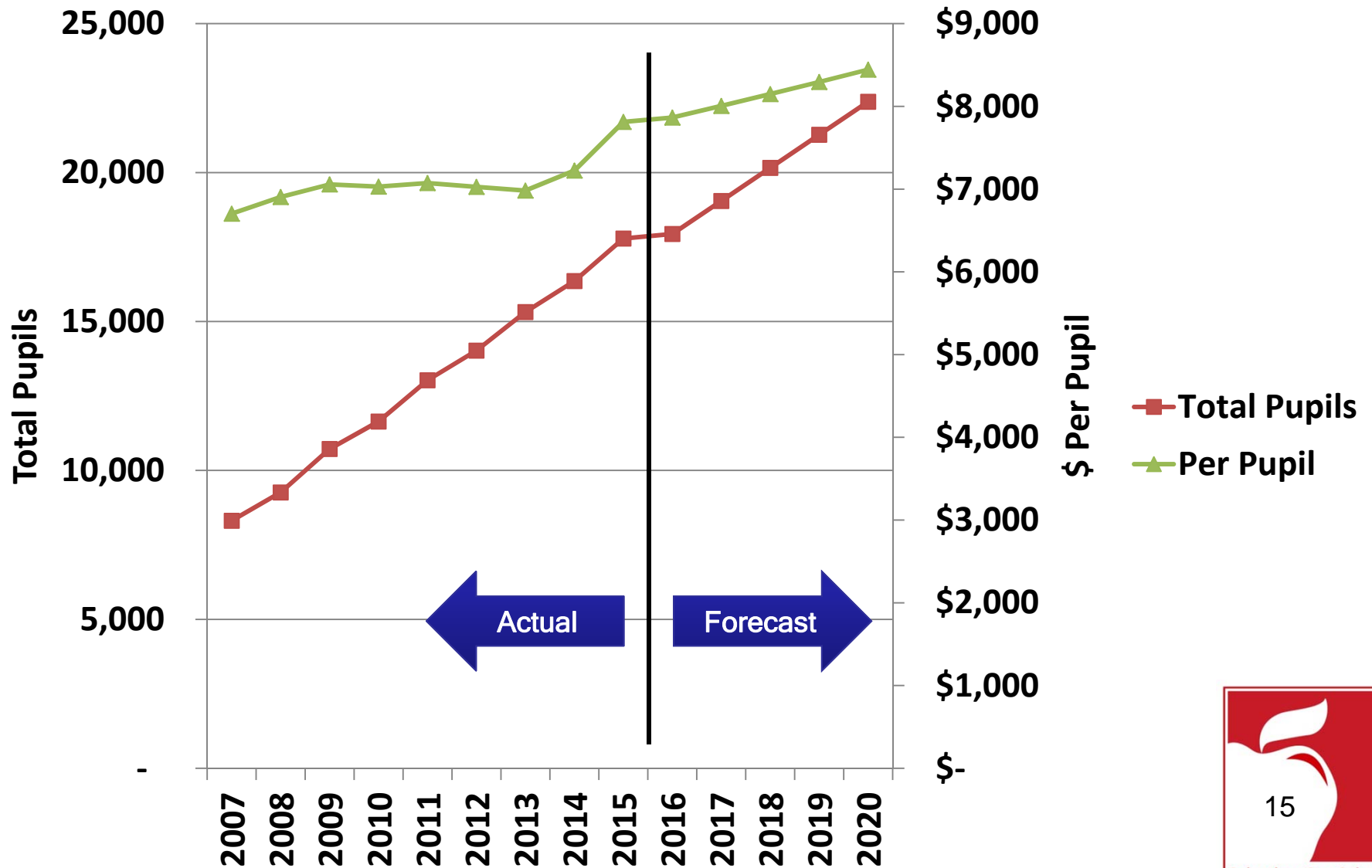
# Expenditures



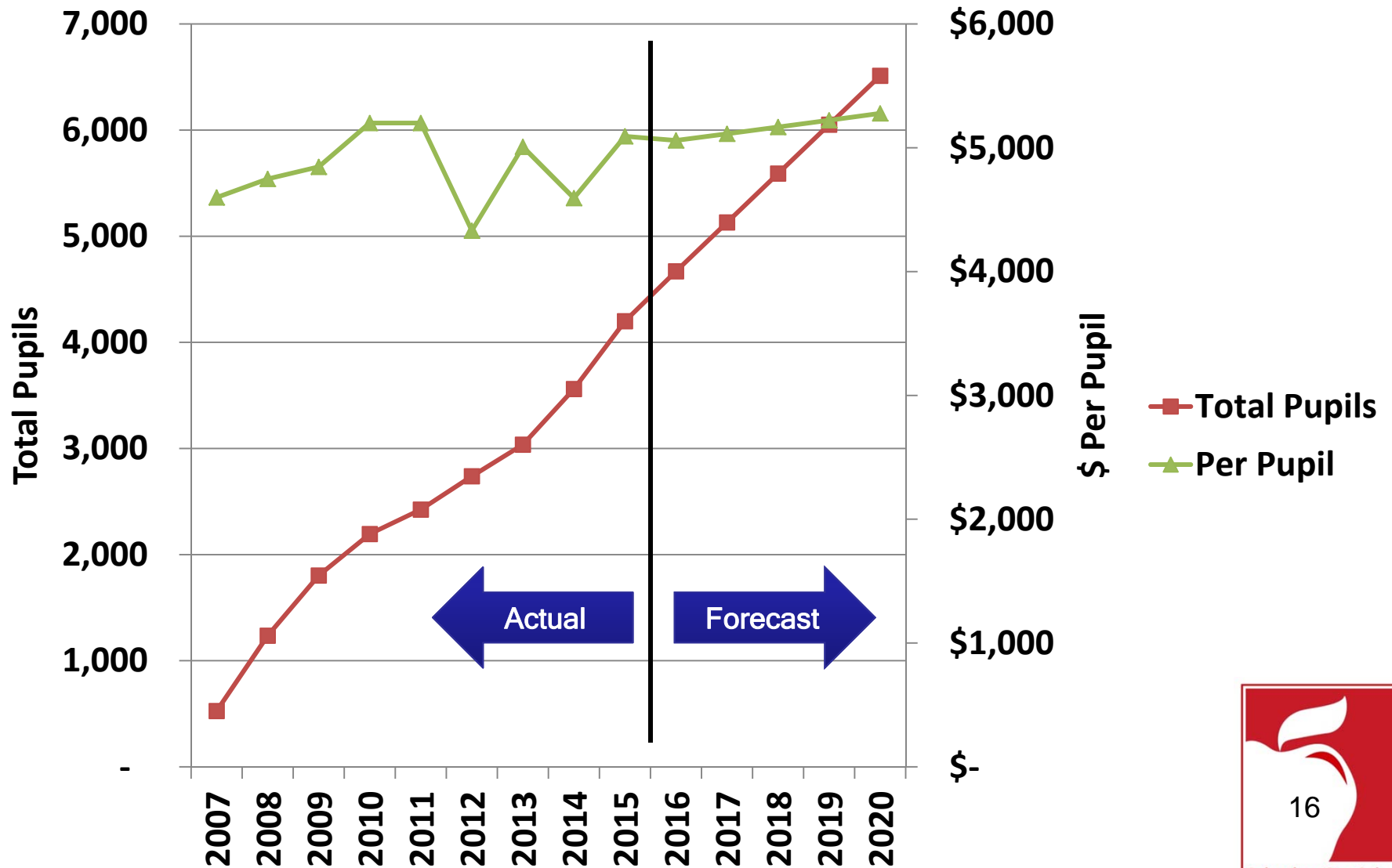
3% All Other Exp.  
 21% Comm. Schs., etc.  
 11% Non-Personnel  
 65% Personnel

- All Other Expenditures
- Comm Schools, Vouchers, Ed Choice, STEM
- Non-Personnel
- Personnel

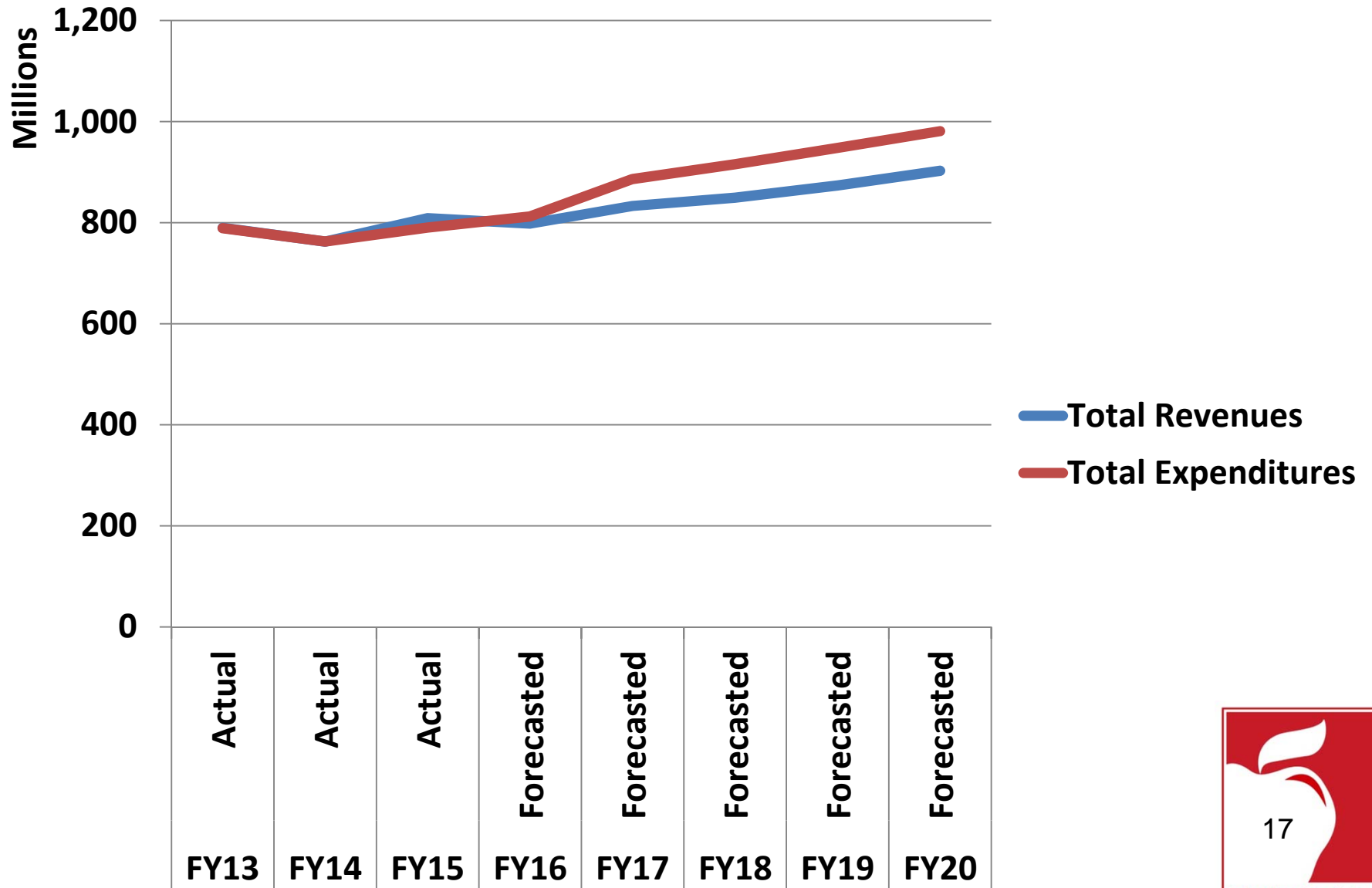
# Community Schools - Forecast Trend



# Vouchers - Forecast Trend

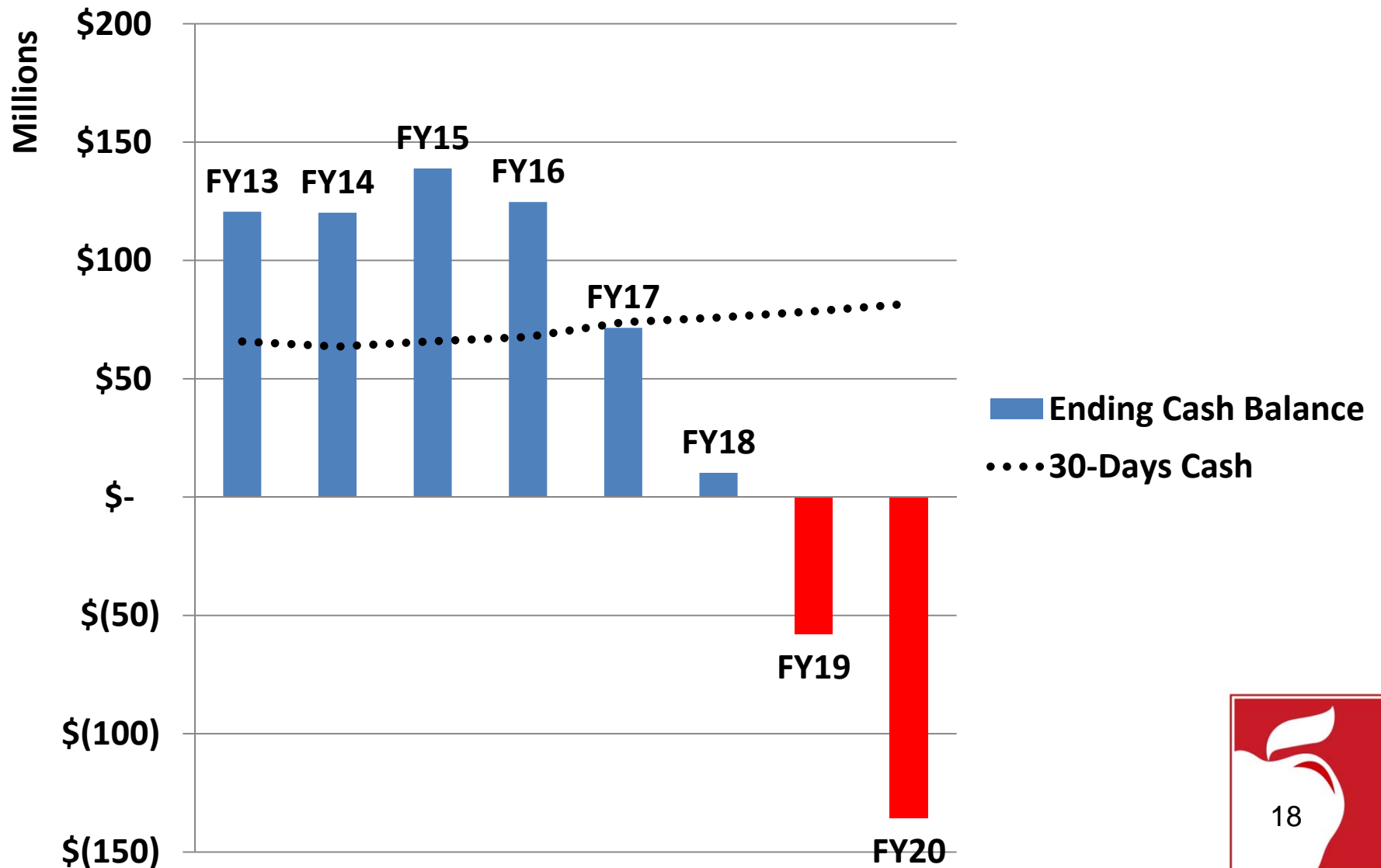


# Revenues vs. Expenditures





# Ending Cash Balance



# Next Steps

- May 17<sup>th</sup> Board agenda for adoption
- File with ODE
- Finalize FY17 Budget / Appropriations Resolution
  - All Other Funds Included
  - Board adoption in June

Questions / Comments